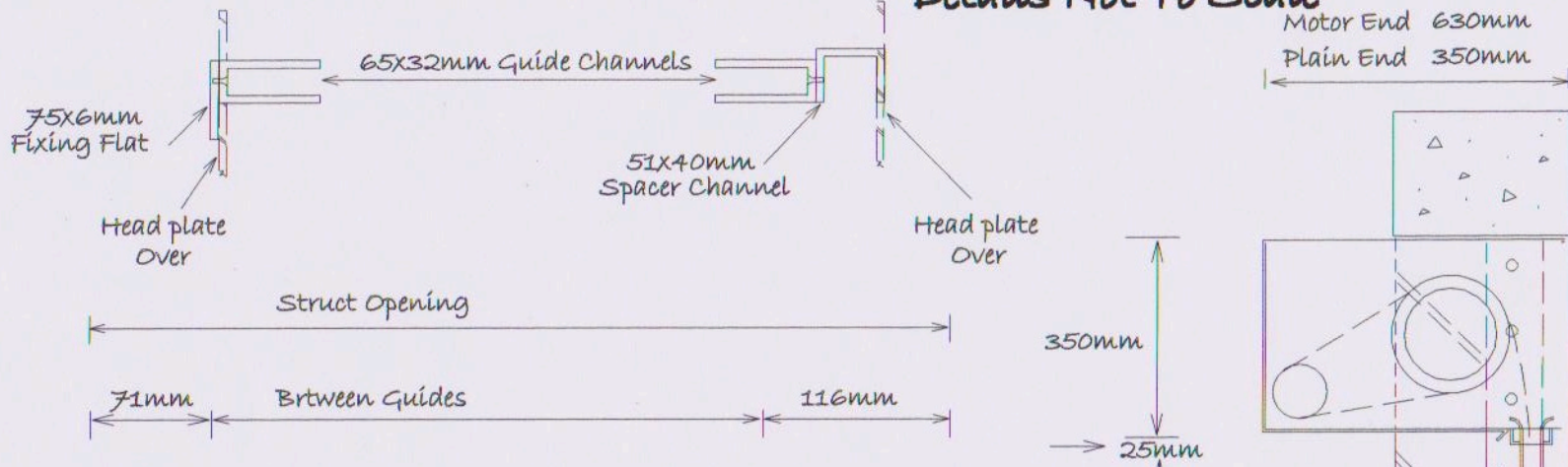
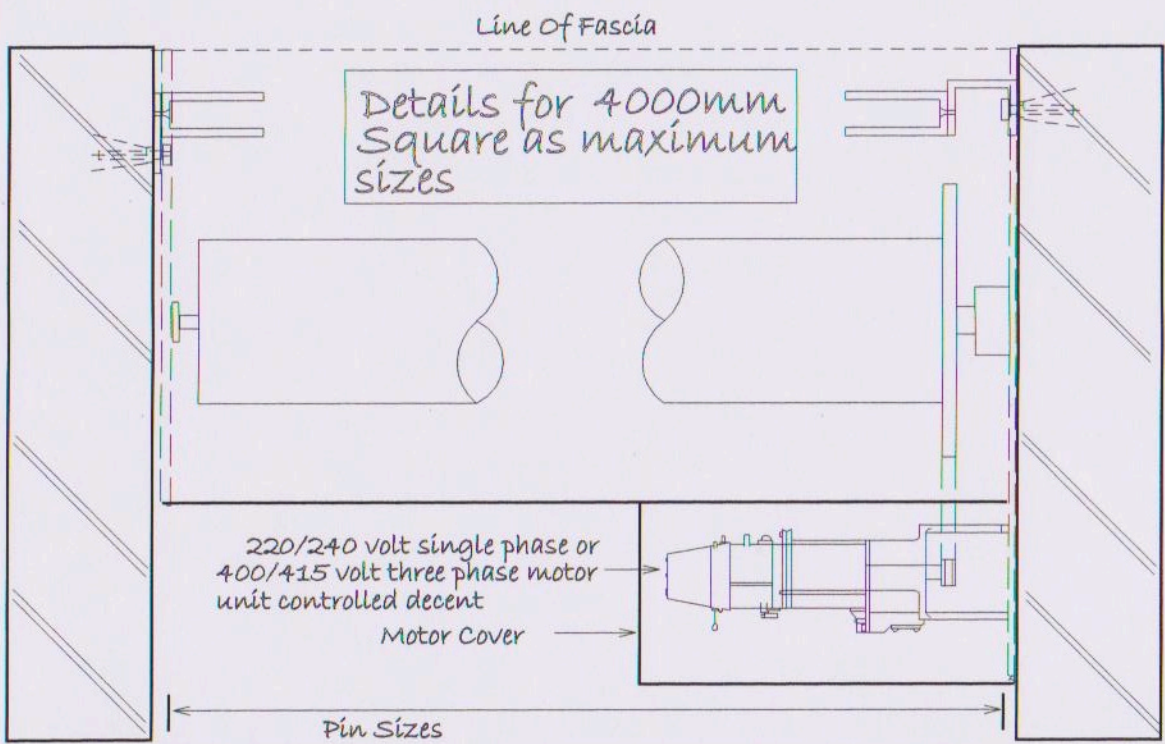


Details Not To Scale



1. It is the clients responsibility to ensure the structure is capable of accepting the fixing shown and supporting the door Product weight at rest and during operation
2. Approx Door weight.....Kg
3. It is recommended any structures encasing the shutter parts would be made to hinge aside or be removable
4. Shutters are fitted with full four sided coil casings and motor casing
5. Motor unit has manual over-ride facility to be used to raise shutter in the event of power failure
6. **Power requirement by others**
 - A. 220/240 volt single phase isolator
 - B. 400/415 volt three phase isolator



Security Shutters Ltd Unit 2 Brooklands Approach Romford Essex RM1 1DX Tel 01708722334 Fax 01708750900 sales@securityshutters.entadsl.com	Client	Site	Description	Job Number	Drawing No.	Revision
			1 No Electrically Operated Fire Resistant Rolling Shutter Controlled Decent Between Fixed Installation	Product Code SS F240	Date: / /	BF