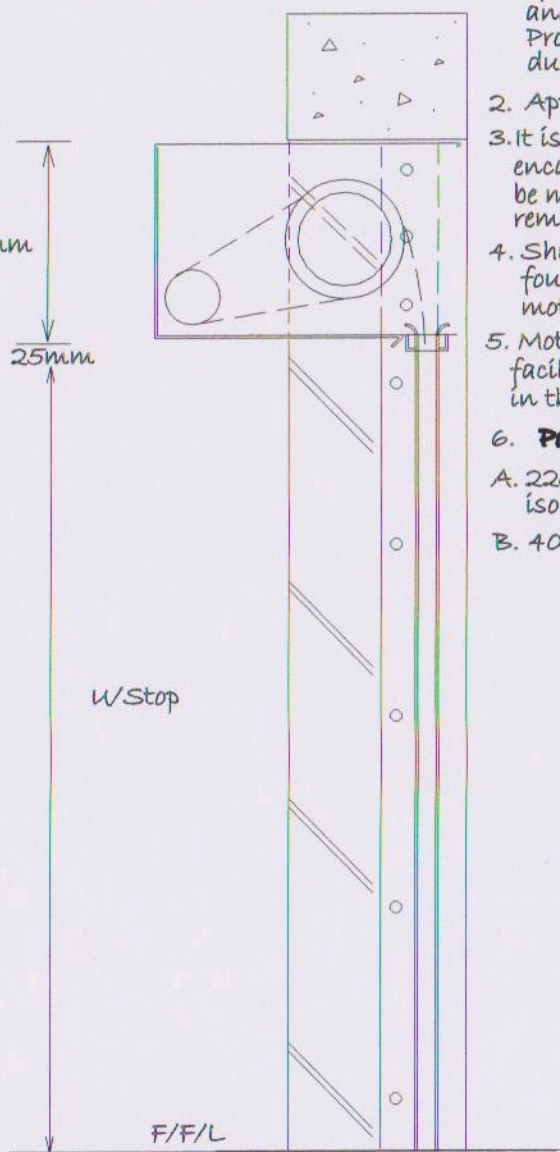
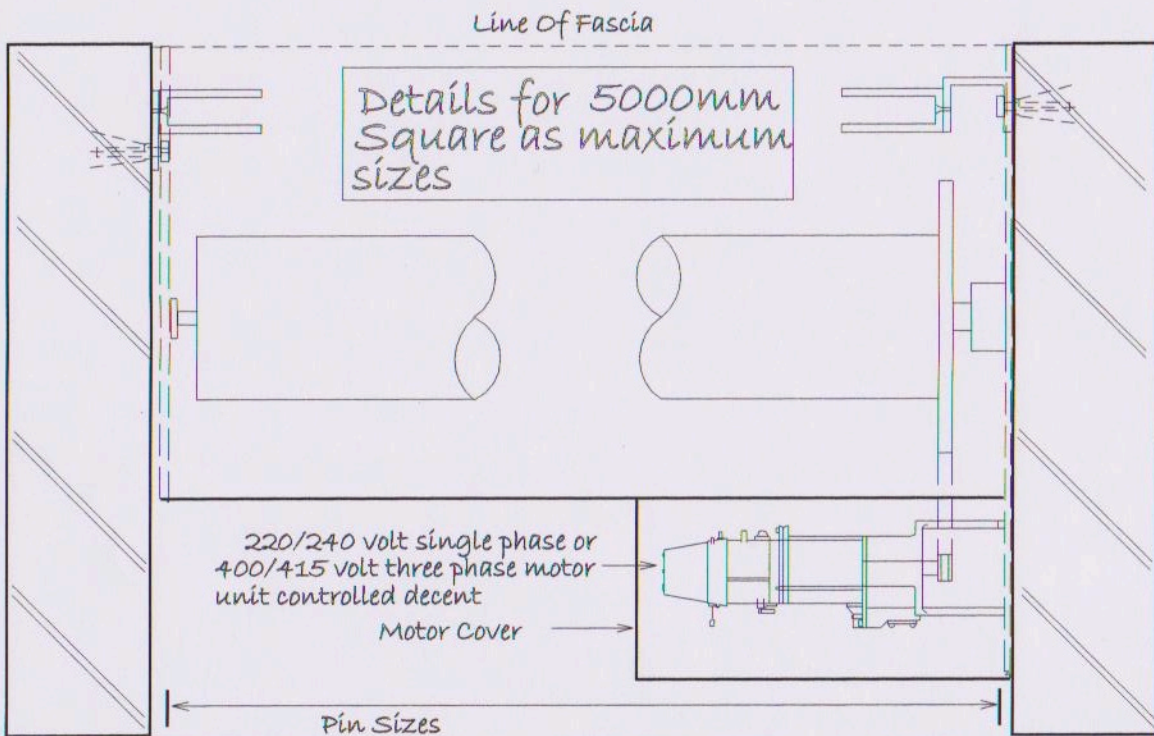
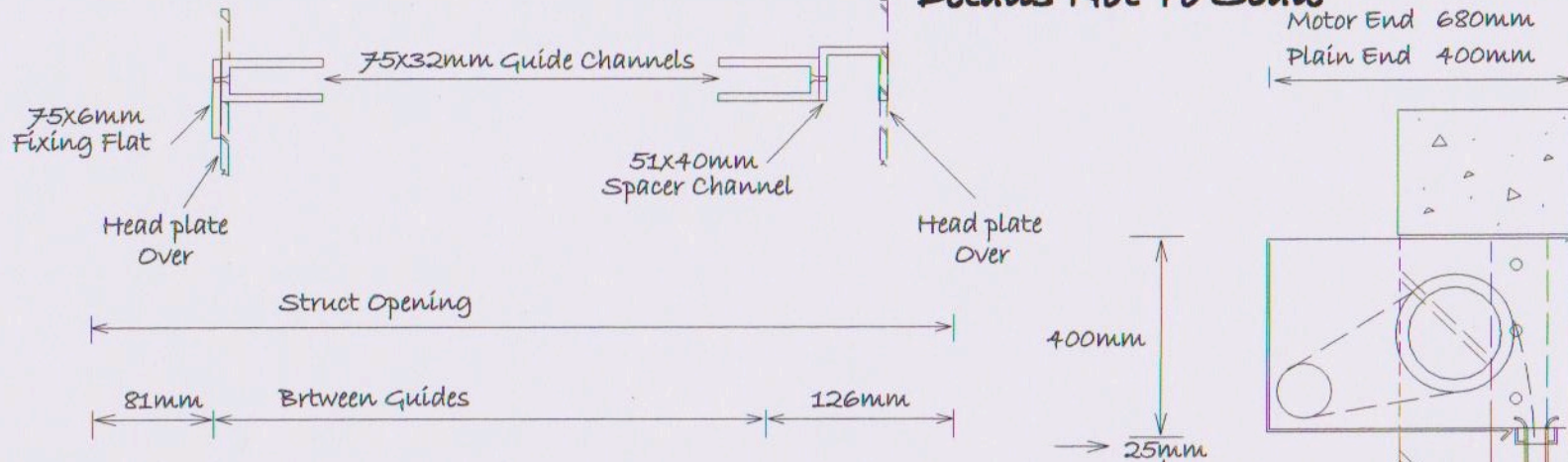


**Details Not To Scale**



1. It is the clients responsibility to ensure the structure is capable of accepting the fixing shown and supporting the door Product weight at rest and during operation
2. Approx Door weighr.....Kg
3. It is recommended any structures encasing the shutter parts would be made to hinge aside or be removable
4. Shutters are fitted with full four sided coil casings and motor casing
5. Motor unit has manual over-ride facility to be used to raise shutter in the event of power failure
6. **Power requirement by others**
  - A. 220/240 volt single phase isolator
  - B. 400/415 volt three phase isolator

Security Shutters Ltd  
 Unit 2  
 Brooklands Approach  
 Romford Essex  
 RM1 1DX  
 Tel 01708722334  
 Fax 01708750900  
 sales@securityshutters.entadsl.com

Client	Site	Description	Job Number	Drawing No.	Revision
		1 No Electrically Operated Fire Resistant Rolling Shutter Controlled Decent <b>Between Fixed Installation</b>	Product Code <b>SS P240</b>	Date: / /	BF