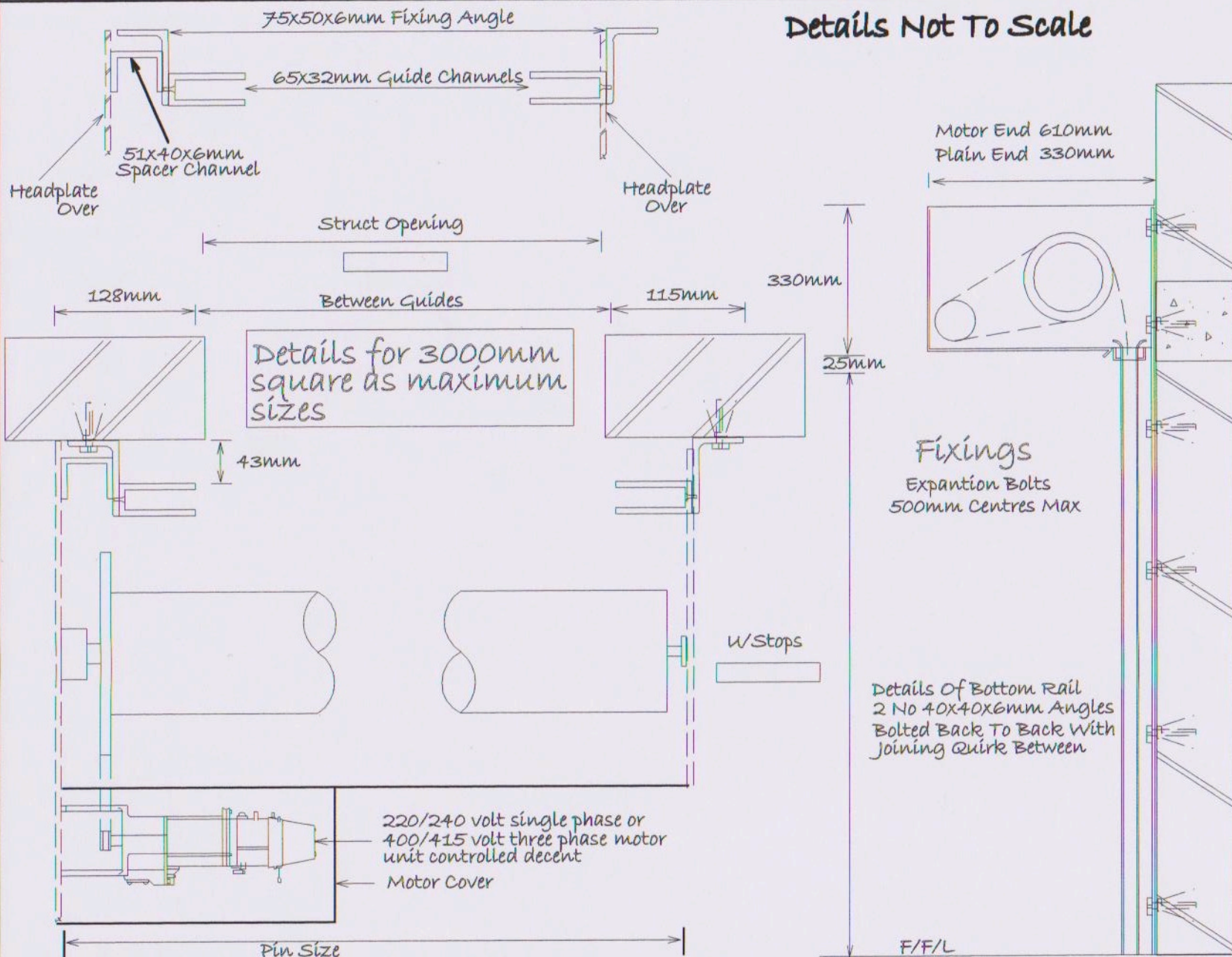


Details Not To Scale

NOTES



1. It is The Clients Responsibility to ensure the structure is capable of accepting the fixings shown and supporting the door / Product weight whilst at rest and during operation
2. Approx Door weight.....Kg
3. It is recommended any structures encasing the shutter parts would be made to hinge aside or be removable
4. Shutter is fitted with a full three sided galvanised steel coil casing and motor cover
5. Motor unit has manual over-ride facility to be used to raise shutter in the event of power failure
6. **Power requirement by others**
 - A. 220/240 volt single phase isolator
 - B. 400/415 volt three phase isolator

Security Shutters Ltd
 Unit 2
 Brooklands Approach
 Romford Essex
 RM1 1DX
 Tel: 01708722334
 Fax: 01708750900
 sales@securitytshutters.entadsl.com

Client	Site	Description	Job Number	Drawing No.	Revision
		1 No Electrically Operated Fire Resistant Rolling Shutter Controlled Decent Face Fixed Installation	Product Code SS F240	Date: / /	BF