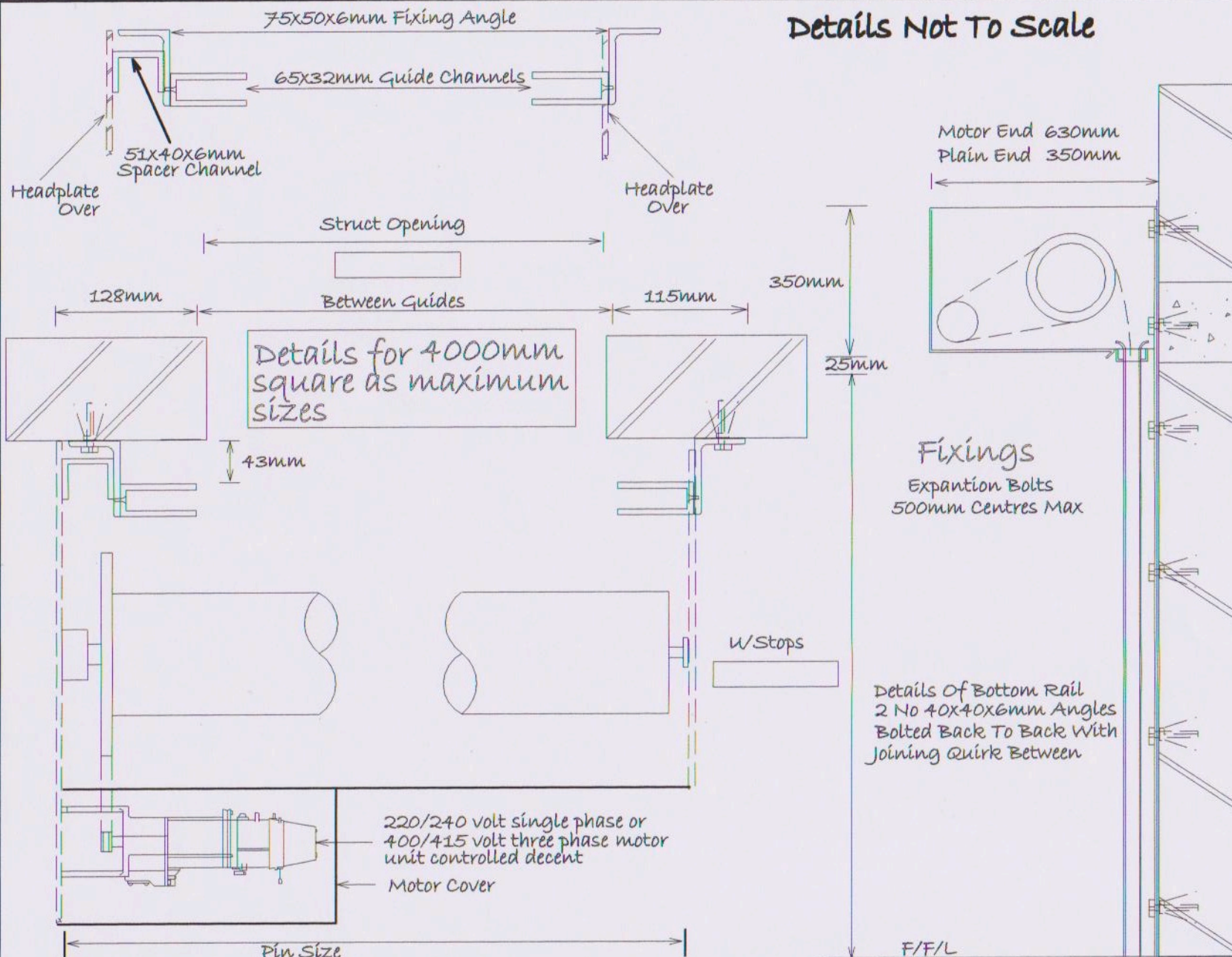


Details Not To Scale

NOTES



1. It is The Clients Responsibility to ensure the structure is capable of accepting the fixings shown and supporting the door / Product weight whilst at rest and during operation
2. Approx Door weight.....Kg
3. It is recommended any structures encasing the shutter parts would be made to hinge aside or be removable
4. Shutter is fitted with a full three sided galvanised steel coil casing and motor cover
5. Motor unit has manual over-ride facility to be used to raise shutter in the event of power failure
6. **Power requirement by others**
 - A. 220/240 volt single phase isolator
 - B. 400/415 volt three phase isolator

Fixings
Expansion Bolts
500mm Centres Max

Details of Bottom Rail
2 No 40x40x6mm Angles
Bolted Back To Back With
Joining Quirk Between

Security Shutters Ltd
Unit 2
Brooklands Approach
Romford Essex
RM1 1DX
Tel: 01708722334
Fax: 01708750900
sales@securitytshutters.entadsl.com

Client	Site	Description	Job Number	Drawing No.	Revision
		1 No Electrically Operated Fire Resistant Rolling Shutter Controlled Decent Face Fixed Installation.			BF
			Product Code SS F240	Date: / /	